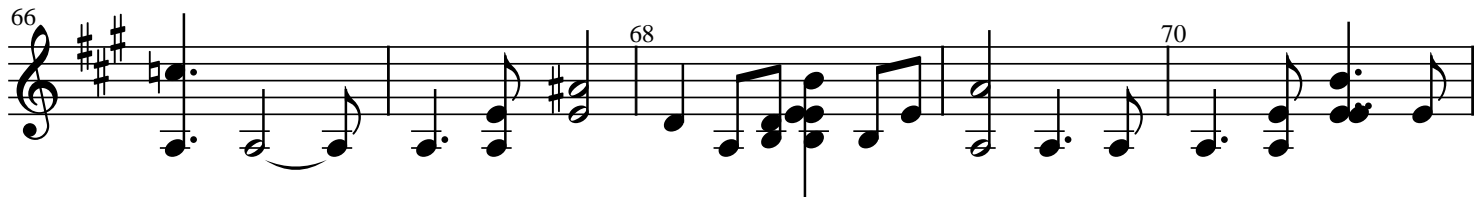
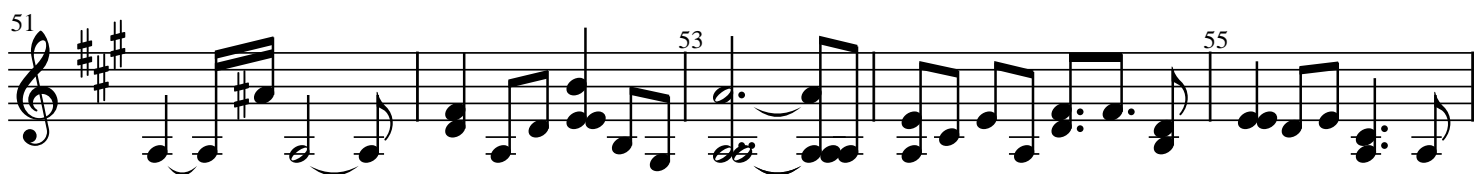


Dim Dom Dim

Trompete

$\text{♩} = 133$

7 9 11 12 14 16 18 20 22 24 26 27 29 31 32 34 36



76 78 5

The musical notation for measures 76-78 of 'The Rose Tree' is shown. Measure 76 begins with a treble clef and a key signature of three sharps (F#, C#, G#). The melody starts on a half note G#4, followed by a quarter note A4, a quarter note B4, and a quarter note C5. The bass line consists of a half note G#2, a half note F#2, and a whole note E2. Measure 77 continues the melody with a quarter note D5, a quarter note C5, a quarter note B4, and a quarter note A4. The bass line continues with a half note D2, a half note C2, and a whole note B1. Measure 78 is a whole rest for both the treble and bass staves, indicating a full measure of silence. The number '5' is written above the staff, likely indicating a measure rest or a section marker.